

SILOCELL Dark Grey 1000mm x 1.5mm

Product SKU: 1001627

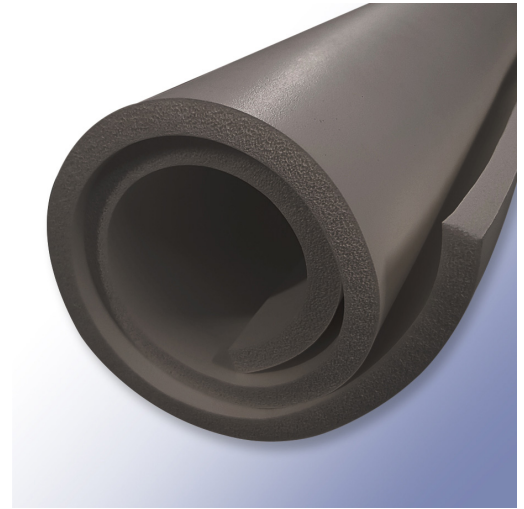
Expanded closed cell silicone sponge offers many of performance benefits of solid silicone in a softer and more compliant form. Other densities available but may be subject to minimum order quantities.

Colour: Dark Grey

Material: Silicone

Operating temperature range: -40°C to 200°C

FAR 25/ JAR 25 /CS 25 Horizontal Flammability Tests and Automotive Standard Part 571MVSS302, REACH and RoHS.



Physical Property	Test Method	Units	Typical Values
Hardness	ASTM D412	ShA	5
Elongation at Break	ASTM D412	%	145
Tensile Strength	ASTM D412	MPa	0.6
Tear Resistance	ASTM D412	kN/m	
Compression Set 50% 25hrs @70		%	3.8
Brittle Point	ASTM D746	°C	-80
Thermal Conductivity	VDE 0304	W.m ⁻¹ .K. ¹	0.24
Limiting Oxygen Index	BS 2782 Part 1	%	24
Radiation Resistance		Grays	>105
Dielectric Strength	VDE 0303	kV.mm-1	23
Dielectric Constant	VDE 0303		2.9
Dissipation Factor	VDE 0303		3x10 ⁻⁴
Volume Resistivity	VDE 0303	ohms.cm	3x10 ¹⁵
Water Absorption	ASTM D1056	%	<5

Although the technical details and recommendations made correspond to the best of our knowledge and experience, all the above information must, in every case, be taken as merely indicative and subject to confirmation after long-term practical application; for this reason, anyone who intends to use Polymax products must ensure beforehand that it is suitable for the envisaged application. In every case, the user alone is fully responsible for any consequences deriving from the use of the product. All sales subject to our standard terms www.polymax.co.uk/sales-terms