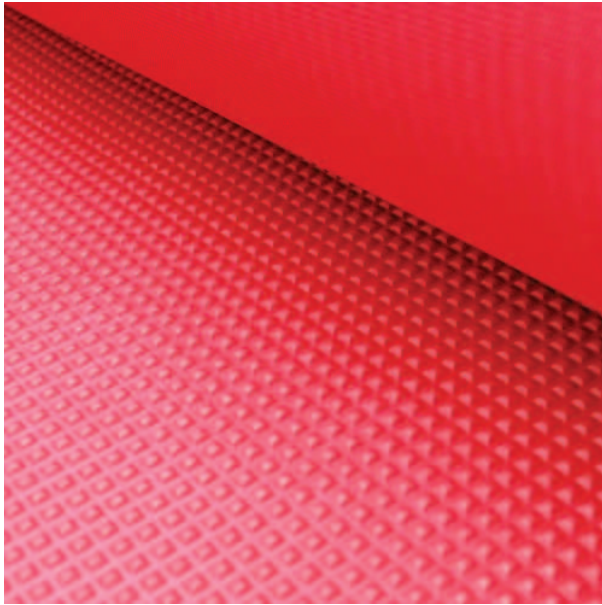


# MATTING

PRODUCT CATALOGUE

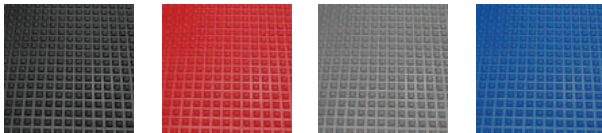


## OVERVIEW

- Made from Natural Rubber (NR) and Styrene Butadiene Rubber (SBR)
- High grip, Anti-slip design
- Hardwearing and very long lasting if looked after
- Available in different colours to suit decour
- Helps fight fatigue and insulates against damp & moisture
- Available in 6mm for heavy traffic areas

## DETAILS

Designed for wet environments, Polymax PYRAMIC rubber matting provides a hygienic, economical, hard wearing and anti-slip floor covering that is suitable for factory floors, clubs, bars, smoking areas, train stations, wet areas in theme parks as well as garden centres.



Due to the raised pyramid design of the surface, PYRAMIC rubber flooring has excellent anti fatigue properties which aids operator fatigue in shops, factories and offices. The non-slip top design combined with a fabric finish bottom provides a safe, reliable working surface.

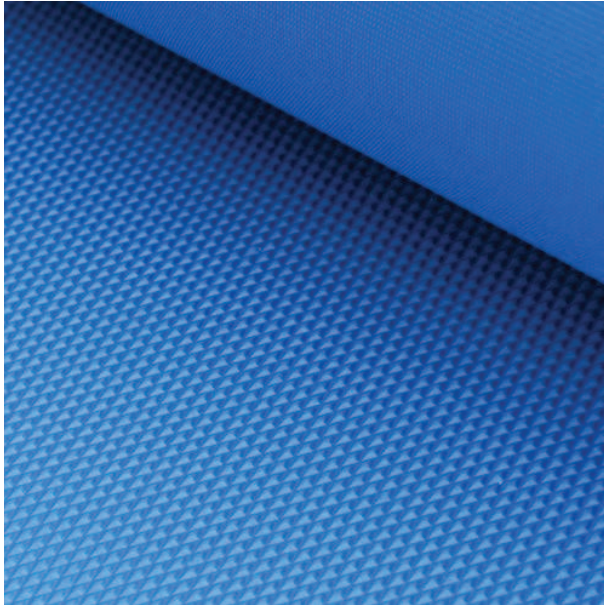
PYRAMIC rubber matting is currently available in a range of colours including grey, blue and red, in addition to black, making it suitable for a variety of applications

Part Number	Width (mm)	Roll Length (m)	Colour	Thickness (mm)
1002052	1200	10	Black	3
1002053	1200	10	Blue	3
1002054	1200	10	Grey	3
1002055	1200	10	Red	3
1002072	1200	10	Black	6

<b>Material</b>	NR/SBR
<b>Hardness (Shore A)</b>	65
<b>Maximum Temperature (°C)</b>	70
<b>Minimum Temperature (°C)</b>	-10
<b>Tensile Strength (MPa)</b>	35
<b>Elongation at break (%)</b>	250

This information is for customer guidance only. Polymax reserves the right to amend specification without prejudice.

**Polymax Ltd.** Building 90, SEME, Budds Lane Bordon, Hampshire, GU35 0JE, United Kingdom.  
Tel: +44 1420 474123 | Fax: +44 1420 487816 | Email: sales@poymax.co.uk, www.polymax.co.uk

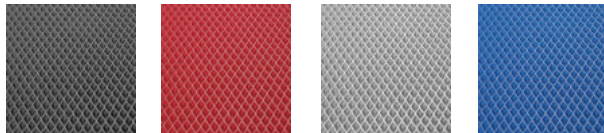


## OVERVIEW

- Made from Natural Rubber (NR) and Styrene Butadiene Rubber (SBR)
- High grip, Anti-slip design
- Hardwearing and very long lasting if looked after
- Available in different colours to suit decour
- Helps fight fatigue and insulates against damp & moisture

## DETAILS

Polymax TRIACE rubber matting is ideal for foyers, production assembly lines, work benches, walkways and applications where grip and comfort are paramount. The press moulded, patterned surface provides a hygienic, economical, hard wearing and anti-slip floor covering.



Due to the raised Triangular design of the surface, TRIACE rubber flooring has excellent anti fatigue properties which aids operator fatigue in shops, factories and offices. The non-slip top design combined with a fabric finish bottom provides a safe, reliable working surface.

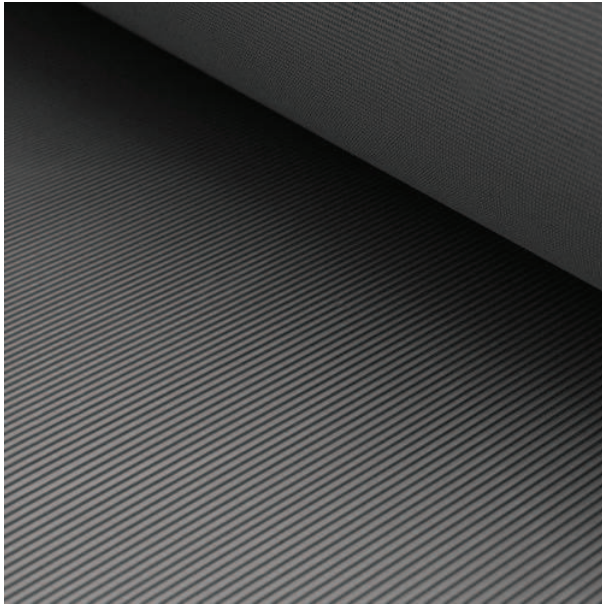
TRIACE is currently available in a range of colours including grey, blue and red, in addition to black, making it suitable for a variety of applications.

Part Number	Width (mm)	Roll Length (m)	Colour	Thickness (mm)
1001352	1200	10	Black	3
1001420	1200	10	Red	3
1002051	1200	10	Grey	3
1002068	1200	10	Blue	3

<b>Material</b>	NR/SBR
<b>Hardness (Shore A)</b>	65
<b>Maximum Temperature (°C)</b>	70
<b>Minimum Temperature (°C)</b>	-10
<b>Tensile Strength (MPa)</b>	35
<b>Elongation at break (%)</b>	250

This information is for customer guidance only. Polymax reserves the right to amend specification without prejudice.

Polymax Ltd. Building 90, SEME, Budds Lane Bordon, Hampshire, GU35 0JE, United Kingdom.  
Tel: +44 1420 474123 | Fax: +44 1420 487816 | Email: sales@poymax.co.uk, www.poymax.co.uk



## OVERVIEW

- Made from Natural Rubber (NR) and Styrene Butadiene Rubber (SBR)
- High grip, Anti-slip design
- Hardwearing and very long lasting if looked after
- Also made in extra wide rolls

## DETAILS

Polymax FINA was designed with a non slip ribbed top surface and high grip cloth finished bottom to provide a hygienic, economical, hard wearing and an ideal anti-slip floor covering.

FINA Rubber matting is suitable for foyers, work benches, walkways, production assembly lines, entrance ways, office applications, dog training

facilities, construction sites and anywhere there is a lot of activity.

A similar product with electrical safety built in for use up to 450V and 650Volts, see Electrical safety matting, is also available.

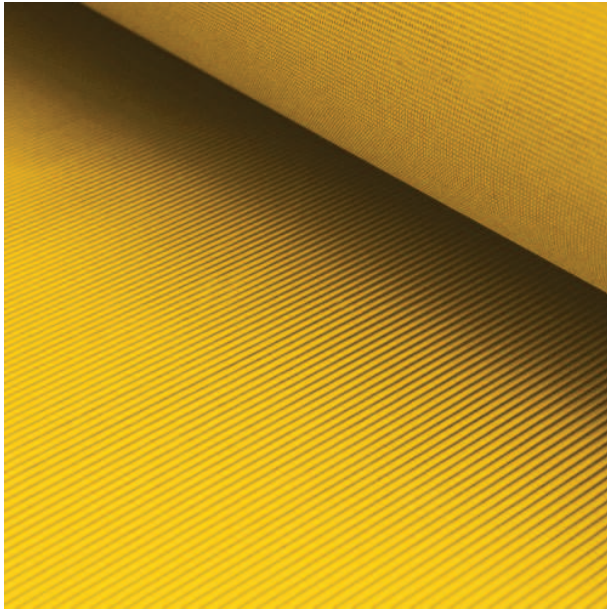
Part Number	Width (mm)	Roll Length (m)	Colour	Thickness (mm)
1001338	1000	10	Black	3
1001344	1200	10	Black	3
1001427	2000	10	Black	3
1001482	915	10	Black	3
1001341	1000	10	Black	4.5
1001347	1200	10	Black	4.5
1001342	1000	10	Black	6
1001348	1200	10	Black	6
1001343	1000	10	Black	9.5
1001349	1200	10	Black	9.5

<b>Material</b>	NR/SBR
<b>Hardness (Shore A)</b>	65
<b>Maximum Temperature (°C)</b>	70
<b>Minimum Temperature (°C)</b>	-10
<b>Tensile Strength (MPa)</b>	35
<b>Elongation at break (%)</b>	250

This information is for customer guidance only. Polymax reserves the right to amend specification without prejudice.

**Polymax Ltd.** Building 90, SEME, Budds Lane Bordon, Hampshire, GU35 0JE, United Kingdom.  
Tel: +44 1420 474123 | Fax: +44 1420 487816 | Email: sales@poymax.co.uk, www.poymax.co.uk



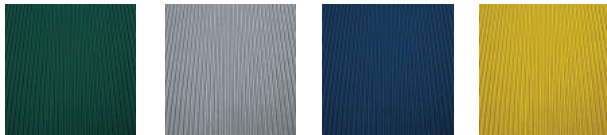


## OVERVIEW

- Made from Natural Rubber (NR) and Styrene Butadiene Rubber (SBR)
- High grip, Anti-slip design
- Hardwearing and very long lasting if looked after
- Available in different colours to suit decour
- Helps fight fatigue and insulates against damp & moisture

## DETAILS

Polymax FINA premium was designed with a non slip ribbed top surface and high grip cloth finished bottom to provide a hygienic, economical, hard wearing and an ideal anti-slip floor covering.



Suitable for foyers, work benches, walkways, production assembly lines, entrance ways, office applications, dog training facilities, construction sites and anywhere there is a lot of activity.

Due to its design, FINA rubber rolls are flexible and easy to roll up and store when not in use, making it ideal for garden parties and other non-permanent uses. FINA can also be easily cut and trimmed to bespoke sizes.

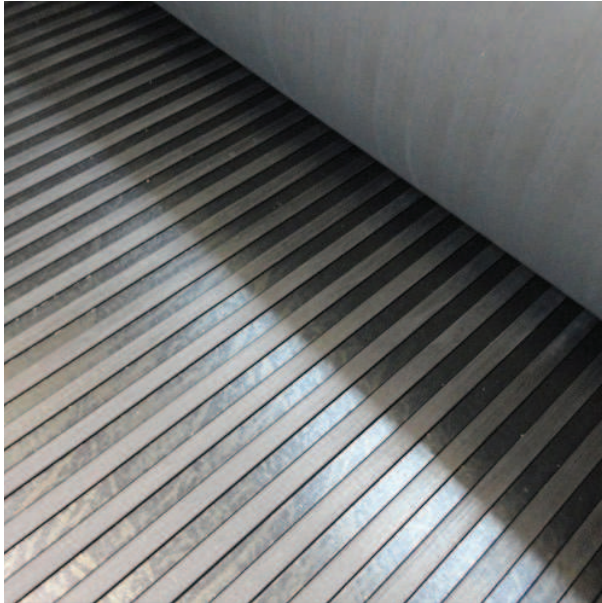
A variety of colours including high visibility make FINA premium the ideal flooring for construction sites, and other dangerous areas. Colours available include grey, yellow and green.

Part Number	Width (mm)	Roll Length (m)	Colour	Thickness (mm)
1001340	1200	10	Green	3
1001395	1200	10	Moonlight Grey	3
1001396	1200	10	Dark Blue	3
1001397	1200	10	Yellow	3
1003420	1200	10	Hi-Viz Yellow	3

<b>Material</b>	NR/SBR
<b>Hardness (Shore A)</b>	65
<b>Maximum Temperature (°C)</b>	70
<b>Minimum Temperature (°C)</b>	-10
<b>Tensile Strength (MPa)</b>	35
<b>Elongation at break (%)</b>	250

This information is for customer guidance only. Polymax reserves the right to amend specification without prejudice.

**Polymax Ltd.** Building 90, SEME, Budds Lane Bordon, Hampshire, GU35 0JE, United Kingdom.  
Tel: +44 1420 474123 | Fax: +44 1420 487816 | Email: sales@poymax.co.uk, www.polymax.co.uk



## OVERVIEW

- Made from Natural Rubber (NR) and Styrene Butadiene Rubber (SBR)
- High grip, Anti-slip design
- Hardwearing and very long lasting if looked after
- Also made in extra wide rolls

## DETAILS

Polymax VIDA rubber matting was designed with a high quality broad grooved top surface and high grip cloth finished bottom surface to provide a hygienic, economical, hard wearing and an ideal anti-slip floor covering. Made partly from recycled rubber.

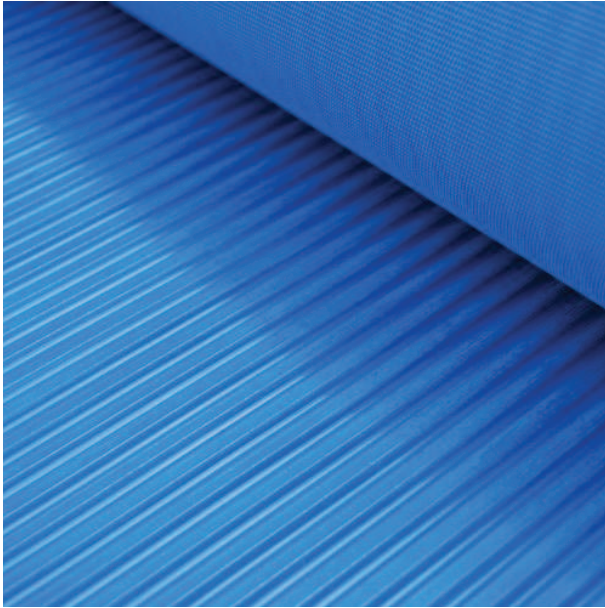
Suitable for foyers, work benches, walkways, production assembly lines, entrance ways, office applications, construction sites and anywhere there is a lot of activity.

Part Number	Width (mm)	Roll Length (m)	Colour	Thickness (mm)
1001402	1200	10	Black	4.5
1002031	1000	10	Black	4.5
1002032	2000	10	Black	4.5

<b>Material</b>	NR/SBR
<b>Hardness (Shore A)</b>	65
<b>Maximum Temperature (°C)</b>	70
<b>Minimum Temperature (°C)</b>	-10
<b>Tensile Strength (MPa)</b>	35
<b>Elongation at break (%)</b>	250

This information is for customer guidance only. Polymax reserves the right to amend specification without prejudice.

**Polymax Ltd.** Building 90, SEME, Budds Lane Bordon, Hampshire, GU35 0JE, United Kingdom.  
 Tel: +44 1420 474123 | Fax: +44 1420 487816 | Email: sales@poymax.co.uk, www.polymax.co.uk



## OVERVIEW

- Made from Natural Rubber (NR) and Styrene Butadiene Rubber (SBR)
- High grip, Anti-slip design
- Hardwearing and very long lasting if looked after
- Available in different colours to suit decour
- Helps fight fatigue and insulates against damp & moisture

## DETAILS

Polymax VIDA rubber matting was designed with a high quality broad grooved top surface and high grip cloth finished bottom surface to provide a hygienic, economical, hard wearing and an ideal anti-slip floor covering. Made partly from recycled rubber.



Suitable for foyers, work benches, walkways, production assembly lines, entrance ways, office

applications, construction sites and anywhere there is a lot of activity.

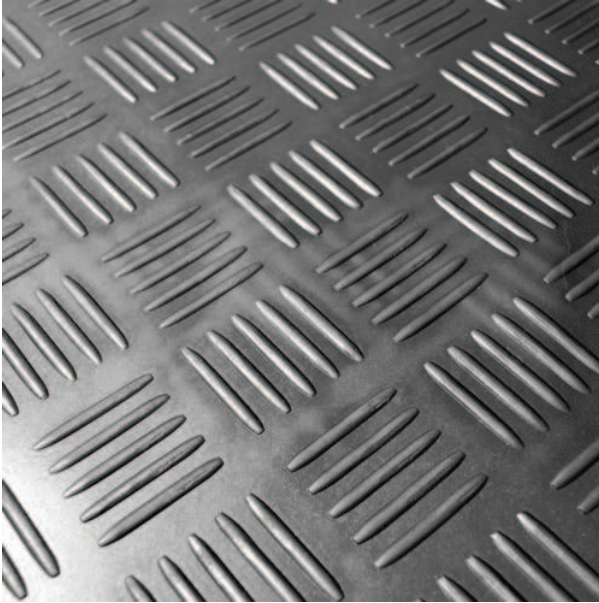
VIDA comes in two different thicknesses to cater for both light and heavy usage areas, making it a very cost effective flooring solution.

A variety of colours including High Visibility Yellow make VIDA the ideal flooring for construction sites, Fire exits and other dangerous areas. Also available in grey, yellow, black, green and blue

Part Number	Width (mm)	Roll Length (m)	Colour	Thickness (mm)
1002073	1600	10	Black	3
1002034	1200	10	Blue	3
1001425	1000	10	Green	3
1001407	1200	10	Grey	3
1002071	1500	10	Hi-Viz Yellow	3
1002233	1000	10	Yellow	3

<b>Material</b>	NR/SBR
<b>Hardness (Shore A)</b>	65
<b>Maximum Temperature (°C)</b>	70
<b>Minimum Temperature (°C)</b>	-10
<b>Tensile Strength (MPa)</b>	35
<b>Elongation at break (%)</b>	250

This information is for customer guidance only. Polymax reserves the right to amend specification without prejudice.



## OVERVIEW

- Blended from hardwearing Natural Rubber (NR) and Styrene Butadiene Rubber (SBR)
- Anti-slip design
- Anti-Fatigue
- Insulating
- Cost Effective
- Extra Wide Rolls Available

## DETAILS

The Polymax CHEK rubber matting is an excellent all round, hard-wearing and economical rubber flooring. The Polymax CHEK is excellent for industrial, commercial or domestic use areas and has a fantastic anti-slip design that not only insulates from cold concrete floors, but also provides great anti-fatigue qualities and comfort.

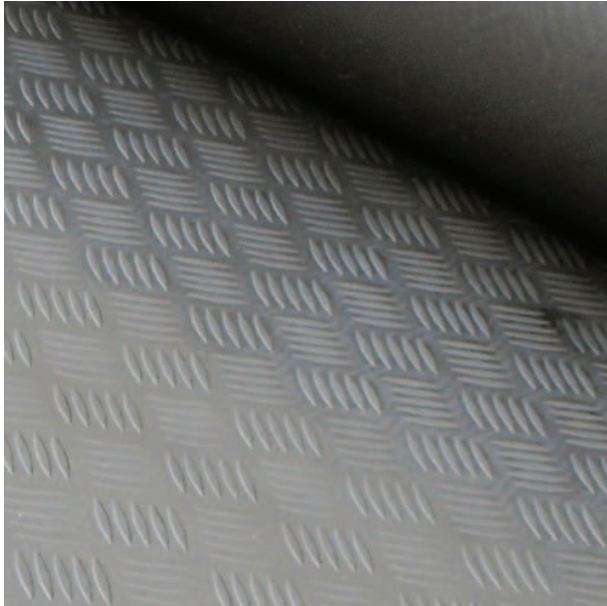
Part Number	Width (mm)	Roll Length (m)	Colour	Thickness (mm)
1001820	1500	10	Black	3
1001821	1500	10	Black	4
1001822	1200	10	Black	5

<b>Material</b>	NR/SBR
<b>Hardness (Shore A)</b>	70
<b>Maximum Temperature (°C)</b>	70
<b>Minimum Temperature (°C)</b>	-10
<b>Tensile Strength (MPa)</b>	4
<b>Elongation at break (%)</b>	250
<b>Abrasion Resistance (mm<sup>3</sup>) (DIN53516)</b>	400

This information is for customer guidance only. Polymax reserves the right to amend specification without prejudice.

**Polymax Ltd.** Building 90, SEME, Budds Lane Bordon, Hampshire, GU35 0JE, United Kingdom.  
 Tel: +44 1420 474123 | Fax: +44 1420 487816 | Email: sales@poymax.co.uk, www.polymax.co.uk





## OVERVIEW

- Blended from hardwearing Natural Rubber (NR) and Styrene Butadiene Rubber (SBR)
- Anti-slip design
- Anti-Fatigue
- Insulating
- Cost-effective
- Available in 4 colours

## DETAILS



The Polymax CHEK rubber matting is an excellent all round, hard-wearing and economical rubber flooring. The Polymax CHEK is excellent for industrial, commercial or domestic use areas and

has a fantastic anti-slip design that not only insulates from cold concrete floors, but also provides great anti-fatigue qualities and comfort.

Premium checkerplate rubber matting, improved design, tear strength and UV stabilized.

Available in Black, Grey or Blue to suit any company colours or decour.

Part Number	Width (mm)	Roll Length (m)	Colour	Thickness (mm)
1001843	1500	10	Black	3
1001844	1500	10	Grey	3
1001845	1500	10	Blue	3
1001846	1500	10	Red	3

<b>Material</b>	NR/SBR
<b>Hardness (Shore A)</b>	70
<b>Maximum Temperature (°C)</b>	70
<b>Minimum Temperature (°C)</b>	-10
<b>Tensile Strength (MPa)</b>	4
<b>Elongation at break (%)</b>	250
<b>Abrasion Resistance (mm<sup>3</sup>) (DIN53516)</b>	400

This information is for customer guidance only. Polymax reserves the right to amend specification without prejudice.

**Polymax Ltd.** Building 90, SEME, Budds Lane Bordon, Hampshire, GU35 0JE, United Kingdom.  
Tel: +44 1420 474123 | Fax: +44 1420 487816 | Email: sales@poymax.co.uk, www.polymax.co.uk



## OVERVIEW

- Blended from hardwearing Natural Rubber (NR) and Styrene Butadiene Rubber (SBR)
- Anti-Slip, aesthetically pleasing design
- Anti-Fatigue
- Insulating
- Cost Effective
- Extra wide for less joins in large areas

## DETAILS

The Polymax Diamax rubber matting is a fantastic new flooring which is hard-wearing and very pleasing on the eye due to its deeper design grooves.



The Polymax DIAMEX is very similar to the Polymax CHEK in that it is excellent for industrial, commercial or domestic use. The raised anti-slip design not only looks great, but also provides great anti-fatigue qualities and comfort under foot.

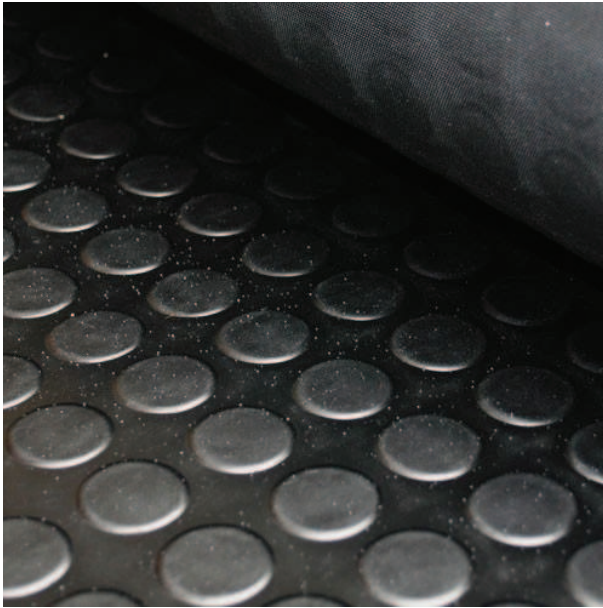
Available in Black in extra wide 1.5 metre x 10 metre rolls and is available in 3mm or 5mm thickness. The harder wearing 5mm thick Diamex can improve productivity by 10% by providing fatigue fighting properties for shop floor staff.

Part Number	Width (mm)	Roll Length (m)	Colour	Thickness (mm)
1002062	1500	10	Black	3
1002487	1500	10	Black	5

<b>Material</b>	NR/SBR
<b>Hardness (Shore A)</b>	70
<b>Maximum Temperature (°C)</b>	70
<b>Minimum Temperature (°C)</b>	-10
<b>Tensile Strength (MPa)</b>	4
<b>Elongation at break (%)</b>	250
<b>Abrasion Resistance (mm<sup>3</sup>) (DIN53516)</b>	400

This information is for customer guidance only. Polymax reserves the right to amend specification without prejudice.

**Polymax Ltd.** Building 90, SEME, Budds Lane Bordon, Hampshire, GU35 0JE, United Kingdom.  
Tel: +44 1420 474123 | Fax: +44 1420 487816 | Email: sales@poymax.co.uk, www.poymax.co.uk



## OVERVIEW

- Blended from hardwearing Natural Rubber (NR) and Styrene Butadiene Rubber (SBR)
- Anti-Slip and comfortable under foot
- Helps insulate from moisture, damp and helps reduce dust
- Aesthetically pleasing coin design
- Available in 1.2mx 10m rolls and 1.5m x 10m

## DETAILS

Polymax CIRCA rubber is ideal for large floor areas such as, kitchens, hallways and offices. It is equally as good for walkways, footbridges, vans and lorries.

The distinguishing circular anti-slip, studded surface gives an aesthetically pleasing finish to any industrial, commercial or domestic setting. Rolls can be cut from 1 linear metre lengths up to 10 metres.

Part Number	Width (mm)	Roll Length (m)	Colour	Thickness (mm)
1001373	1200	10	Black	3
1001421	1500	10	Black	3

<b>Material</b>	NR/SBR
<b>Hardness (Shore A)</b>	85
<b>Maximum Temperature (°C)</b>	70
<b>Minimum Temperature (°C)</b>	-10
<b>Tensile Strength (MPa)</b>	4
<b>Density (g/m<sup>3</sup>)</b>	1.4
<b>Abrasion Resistance (mm<sup>3</sup>) (DIN53516)</b>	160

This information is for customer guidance only. Polymax reserves the right to amend specification without prejudice.

**Polymax Ltd.** Building 90, SEME, Budds Lane Bordon, Hampshire, GU35 0JE, United Kingdom.  
Tel: +44 1420 474123 | Fax: +44 1420 487816 | Email: sales@poymax.co.uk, www.polymax.co.uk



## OVERVIEW

- Blended from hardwearing Natural Rubber (NR) and Styrene Butadiene Rubber (SBR)
- Non slip finish is comfortable and safe under foot
- The mat helps to absorb shock, deaden noise and protect equipment
- Maintaining the mats is effortless, they can be swept, vacuumed and mopped using Polymax Pro-long floor care kit

## DETAILS

Polymax Galaxy Crumb gym flooring was designed using recycled rubber known to ease the strain of exercise and physical training – it has also proven

effective in protecting dumbbells when dropped. Polymax Galaxy can be found in various gym branches from the most popular providers.

Its high quality non-slip surface made using recycled NR/SBR rubber ensures a safe floor in industrial and commercial flooring areas. Apart from gyms, Galaxy has also been popular for use in weight rooms, dance rehearsal studios/rooms and gymnastics halls, all of which require a durable, soft, yet attractive surface.

Polymax Galaxy Crumb comes in rolls to ensure easy installation, removal, or storage depending on your needs. Please call if you are interested in different thicknesses.

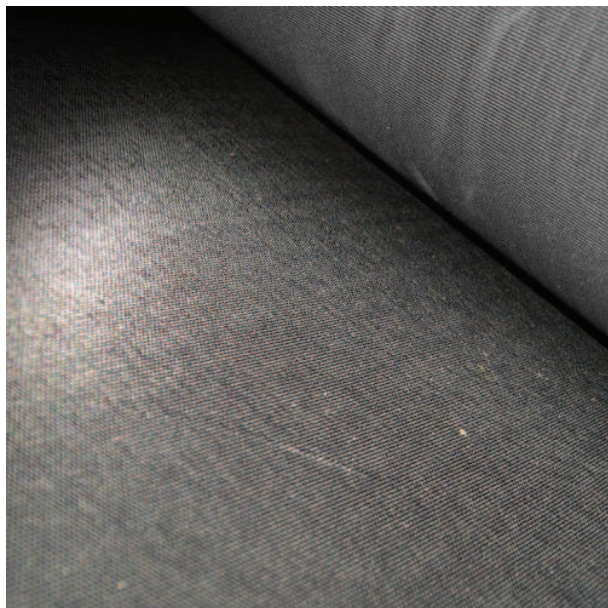
Part Number	Width (mm)	Roll Length (m)	Colour	Thickness (mm)
1002065	1220	10	Black; White	5

<b>Material</b>	NR/SBR
<b>Hardness (Shore A)</b>	70
<b>Maximum Temperature (°C)</b>	70
<b>Minimum Temperature (°C)</b>	-10
<b>Tensile Strength (MPa)</b>	4
<b>Elongation at break (%)</b>	250
<b>Abrasion Resistance (mm<sup>3</sup>) (DIN53516)</b>	400

This information is for customer guidance only. Polymax reserves the right to amend specification without prejudice.

**Polymax Ltd.** Building 90, SEME, Budds Lane Bordon, Hampshire, GU35 0JE, United Kingdom.  
Tel: +44 1420 474123 | Fax: +44 1420 487816 | Email: sales@poymax.co.uk, www.polymax.co.uk





## OVERVIEW

- Made from Recycled Rubber
- Anti-Slip texture on both sides
- Anti-Fatigue
- Insulating
- Cost-effective
- Extra wide rolls and different thicknesses to suit all applications

## DETAILS

Polymax Eco, has a refined textured surface, made from recycled rubber great for the environment. A large roll at 2 meters wide with a cloth impression on both side. This rubber has great anti slip properties.

Available in different thickness to suit harder wearing applications, and manufactured in large rolls to avoid joins where possible.

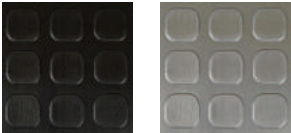
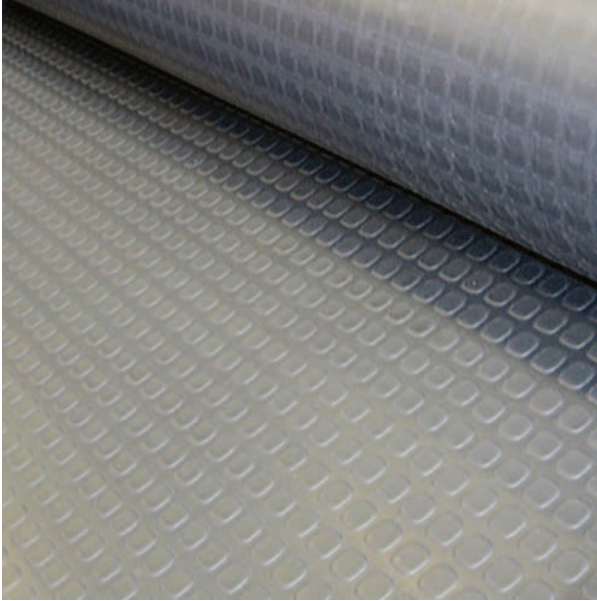
Perfect for back of van or lorries to avoid goods or equipment slipping around.

Part Number	Width (mm)	Roll Length (m)	Colour	Thickness (mm)
1001160	2000	10	Black	3
1001838	2000	10	Black	4
1001161	1400	5	Black	10

<b>Material</b>	NR/SBR
<b>Hardness (Shore A)</b>	65
<b>Maximum Temperature (°C)</b>	70
<b>Minimum Temperature (°C)</b>	-10
<b>Tensile Strength (MPa)</b>	35
<b>Abrasion Resistance (mm<sup>3</sup>) (DIN53516)</b>	250

This information is for customer guidance only. Polymax reserves the right to amend specification without prejudice.

**Polymax Ltd.** Building 90, SEME, Budds Lane Bordon, Hampshire, GU35 0JE, United Kingdom.  
Tel: +44 1420 474123 | Fax: +44 1420 487816 | Email: sales@poymax.co.uk, www.polymax.co.uk



## OVERVIEW

- The Polymax Tetra is excellent for covering large area with minimum joins
- Ideal flooring for heavy and light industrial use, as well as commercial locations
- Simple to install and helps insulate buildings from cold and damp
- Reduces dust and significantly reduces noise
- Available with a raised square anti slip design
- Perfect where oil resistant surface is required
- Better durability and abrasion resistance opposed to our General Rubber Flooring

## DETAILS

Polymax Tetra, has a refined raised square pattern and is available in different colours and widths.

Ideal flooring made from PVC rubber great where oil resistance is paramount.

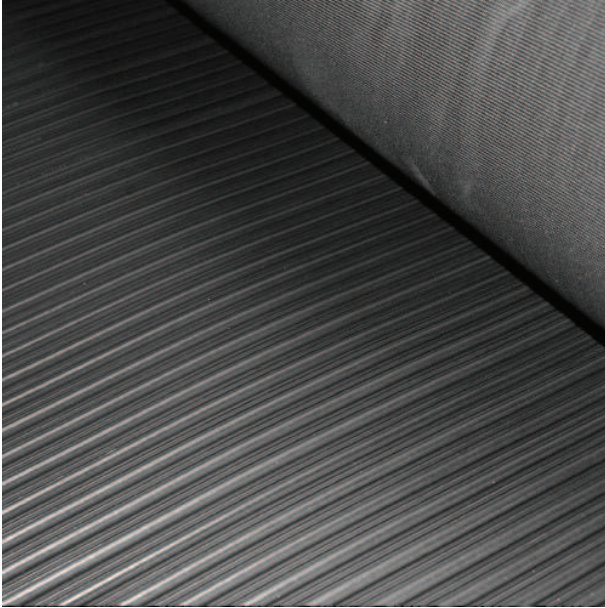
Combined with with a high quality surface finish which is hardwearing, anti-slip and aesthetically pleasing.

Part Number	Width (mm)	Roll Length (m)	Colour	Thickness (mm)
1001829	1200	10	Black	2.4
1002069	1800	10	Black	2.4
1002067	2200	10	Black	2.4
1002057	1000	10	Grey	2.4
1002066	1200	10	Grey	2.4
1002056	2200	10	Grey	2.4

<b>Material</b>	PVC
<b>Hardness (Shore A)</b>	65
<b>Maximum Temperature (°C)</b>	100
<b>Minimum Temperature (°C)</b>	-20
<b>Tensile Strength (MPa)</b>	35
<b>Elongation at break (%)</b>	250

This information is for customer guidance only. Polymax reserves the right to amend specification without prejudice.

**Polymax Ltd.** Building 90, SEME, Budds Lane Bordon, Hampshire, GU35 0JE, United Kingdom.  
Tel: +44 1420 474123 | Fax: +44 1420 487816 | Email: sales@poymax.co.uk, www.polymax.co.uk



## OVERVIEW

- Made from hardwearing Natural Rubber (NR) and SBR
- Very Anti-slip and aesthetic design
- Ideal for heavy traffic use
- Good tread and drainage
- Anti-fatigue properties
- Viable for Commercial and Industrial use
- Rubber is 4.7mm thick for longevity

## DETAILS

Polymax rubber BUS MAT was designed with a high quality, effective groove patterned top surface to

provide a hygienic, economical, hard wearing and is an ideal anti-slip floor covering.

Suitable for a variety of applications including foyers, walkways, production assembly lines, entrance ways, construction sites and public transport such as busses and trains.

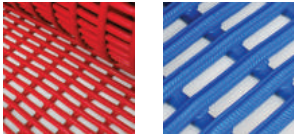
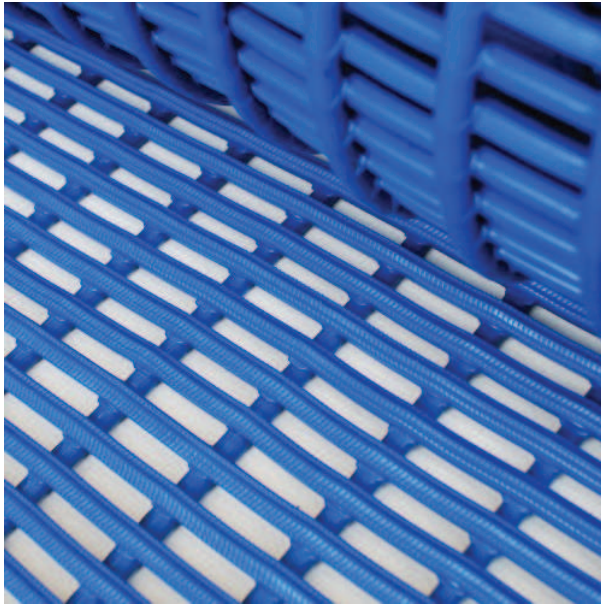
The distinctive design gives it good tread and drainage, increasing suitability to light wet surfaces which require durability and a long product life time. The anti-fatigue properties make it ideal to use around work stations, production assembly lines and anywhere with a high foot fall.

Part Number	Width (mm)	Roll Length (m)	Colour	Thickness (mm)
1001283	1200	10	Black	4.7

<b>Material</b>	NR/SBR
<b>Hardness (Shore A)</b>	65
<b>Maximum Temperature (°C)</b>	70
<b>Minimum Temperature (°C)</b>	-10
<b>Tensile Strength (MPa)</b>	35
<b>Abrasion Resistance (mm<sup>3</sup>) (DIN53516)</b>	250

This information is for customer guidance only. Polymax reserves the right to amend specification without prejudice.

**Polymax Ltd.** Building 90, SEME, Budds Lane Bordon, Hampshire, GU35 0JE, United Kingdom.  
 Tel: +44 1420 474123 | Fax: +44 1420 487816 | Email: sales@poymax.co.uk, www.polymax.co.uk



## OVERVIEW

- Strong flexible PVC matting, resistant to Chlorine, Sea water & Oils
- Excellent drainage and anti-slip properties
- Low maintenance, easy to install and hygienic
- Suitable for indoor and out door use
- Ideal for, Swimming pools, Changing rooms, safety walkways

## DETAILS

Polymax Matrix is a high quality PVC Swimming pool matting. Durable, resilient and especially designed for wet area application where grip is required.

Its open design allows water to drain through whilst maintaining one of the best Slip resistance levels of all Polymax matting. Resistant against Chlorine, Sea

Water and oils it is ideal for swimming pool area's, shower mats, kitchens, spa's and wash down areas.

Available in Blue and red, and is widely used in fitness centres and gyms.

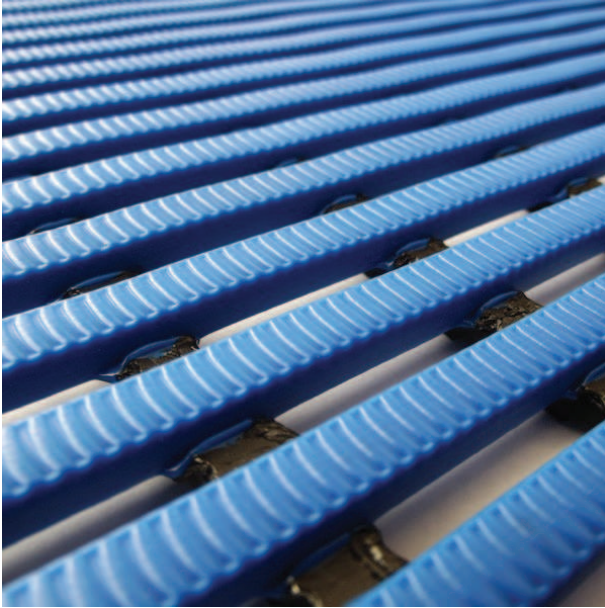
Part Number	Width (mm)	Roll Length (m)	Colour	Thickness (mm)
1002063	1000	10	Blue	12
1002064	600	10	Blue	12
1002076	1000	10	Red	12
1002075	600	10	Red	12
1002066	1200	10	Grey	12
1002056	2200	10	Grey	12

<b>Material</b>	PVC
<b>Hardness (Shore A)</b>	70
<b>Maximum Temperature (°C)</b>	70
<b>Minimum Temperature (°C)</b>	-10
<b>Tensile Strength (MPa)</b>	4
<b>Elongation at break (%)</b>	250
<b>Abrasion Resistance (mm<sup>3</sup>) (DIN53516)</b>	400

This information is for customer guidance only. Polymax reserves the right to amend specification without prejudice.

Polymax Ltd. Building 90, SEME, Budds Lane Bordon, Hampshire, GU35 0JE, United Kingdom.  
Tel: +44 1420 474123 | Fax: +44 1420 487816 | Email: sales@poymax.co.uk, www.polymax.co.uk





## OVERVIEW

- Strong flexible PVC matting, resistant to Chlorine, Sea water & Oils
- Excellent drainage and anti-slip properties DIN 51097 Classification A+B+C
- Sanitised® anti-bacterial and anti-fungal additives for permanent hygiene.
- Low maintenance, easy to install and hygienic.
- Suitable for indoor and out door use
- Ideal for, Swimming pools, Changing rooms, safety walkways

## DETAILS

Polymax Matrix Premium Swimming pool matting is a high quality PVC matting. Durable, resilient and especially designed for pool and wet area application where grip is required.

Its open design and grooved underbars allows water to drain 4 ways whilst maintaining one of the best Slip resistance levels of all Polymax matting. It has anti-bacterial and ant-fungal additives to provide continuous protection against fungal attack and to give maximum barefoot hygiene, ideal for commercial swimming pools and spa's.

Resistant against Chlorine, Sea Water and oils it is ideal for swimming pool areas, shower mats, kitchens, spa's and wash down areas.

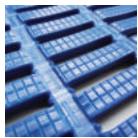
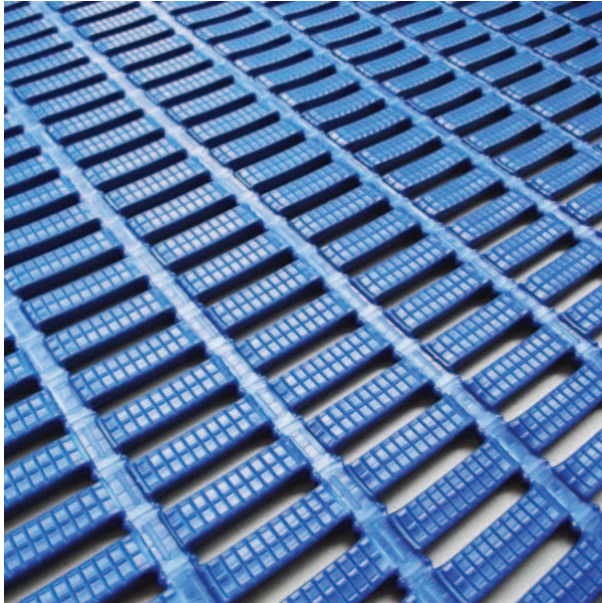
Available in Blue and red, and is widely used in fitness centres and gyms. use around work stations, production assembly lines and anywhere with a high foot fall.

Part Number	Width (mm)	Roll Length (m)	Colour	Thickness (mm)
1002356	1000	10	Blue; Black	12
1002357	500	10	Blue; Black	12

<b>Material</b>	PVC
<b>Hardness (Shore A)</b>	70
<b>Maximum Temperature (°C)</b>	70
<b>Minimum Temperature (°C)</b>	-10

This information is for customer guidance only. Polymax reserves the right to amend specification without prejudice.

**Polymax Ltd.** Building 90, SEME, Budds Lane Bordon, Hampshire, GU35 0JE, United Kingdom.  
Tel: +44 1420 474123 | Fax: +44 1420 487816 | Email: sales@poymax.co.uk, www.polymax.co.uk



## OVERVIEW

- Strong flexible PVC Swimming pool matting, resistant to Chlorine, Sea water & Oils
- Excellent drainage and anti-slip properties
- Ideal for Wet rooms, swimming pools, spa's, kitchens and where slip resistance is paramount
- Low maintenance, easy to install and hygienic.
- Suitable for indoor and out door use

## DETAILS

Polymax Lowline is a high quality PVC Swimming pool mat. Durable, resilient and especially designed for wet area application where grip is required.

Its open design allows water to drain through and is easy to handle and easy to clean. Resistant against

Chlorine, Sea Water and oils it is ideal for swimming pool area's, shower mats, kitchens, boats, Yachts and wash down areas and can also be used in the working environment, clubs, bars, picking lines and where staff have to stand for long periods. This type of PVC matting is comfortable under foot and can help defeat operator fatigue.

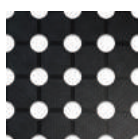
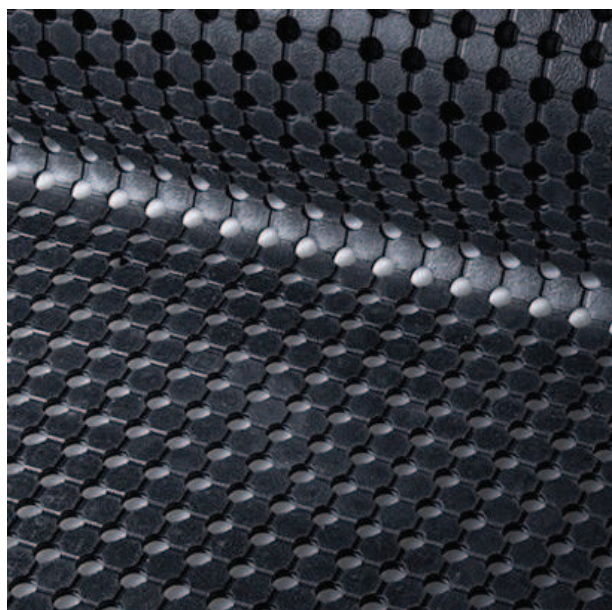
Available in Blue, Red and Green for colour co-ordination.

Part Number	Width (mm)	Roll Length (m)	Colour	Thickness (mm)
1002359	600	10	Blue	6
1002360	910	10	Blue	6

<b>Material</b>	PVC
<b>Hardness (Shore A)</b>	70
<b>Maximum Temperature (°C)</b>	70
<b>Minimum Temperature (°C)</b>	-10

This information is for customer guidance only. Polymax reserves the right to amend specification without prejudice.

**Polymax Ltd.** Building 90, SEME, Budds Lane Bordon, Hampshire, GU35 0JE, United Kingdom.  
Tel: +44 1420 474123 | Fax: +44 1420 487816 | Email: sales@poymax.co.uk, www.polymax.co.uk



## OVERVIEW

- Is made from hardwearing NR & SBR
- Very good Anti-slip & Anti Fatigue properties
- Excellent drainage and easily cleaned, perfect for temporary walk ways
- Wide rolls to cover large areas quickly
- Installation is very quick and straight forward, no adhesive required

## DETAILS

Polymax Array rubber matting provides a high quality anti-fatigue flooring that is perfect for walkways, decking, work stations and outdoor usage in general.

The non-slip top surface provides excellent grip even when soaking wet, combined with raised knobs on the underside it will provide excellent drainage from the top to the bottom. The durable, long lasting matting comes on a roll, so easy installation and removal (for non-permanent use) is a breeze.

Potential applications are walkways for events, dog runs and to aid disabled access over bumpy terrain.

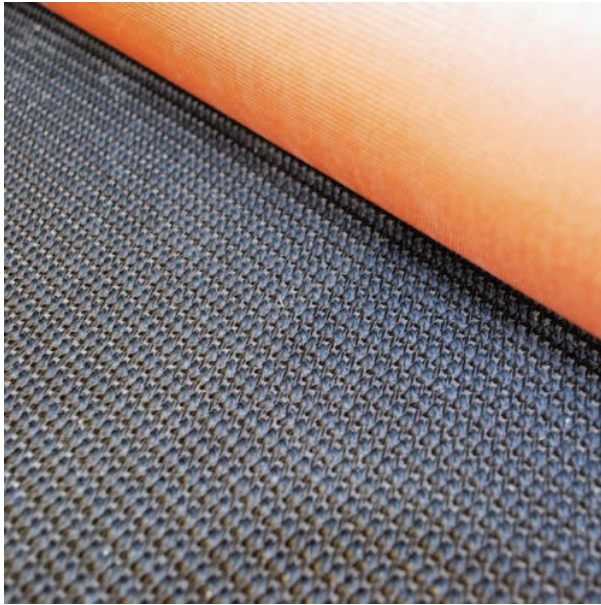
Part Number	Width (mm)	Roll Length (m)	Colour	Thickness (mm)
1002484	1830	10	Black	10

<b>Material</b>	NR/SBR
<b>Hardness (Shore A)</b>	70
<b>Maximum Temperature (°C)</b>	70
<b>Minimum Temperature (°C)</b>	-10
<b>Density (g/m³)</b>	0.8
<b>Tensile Strength (MPa)</b>	4
<b>Elongation at break (%)</b>	250
<b>Abrasion Resistance (mm³) (DIN53516)</b>	400

This information is for customer guidance only. Polymax reserves the right to amend specification without prejudice.

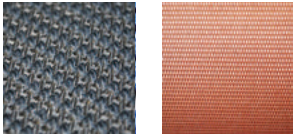
Polymax Ltd. Building 90, SEME, Budds Lane Bordon, Hampshire, GU35 0JE, United Kingdom.  
Tel: +44 1420 474123 | Fax: +44 1420 487816 | Email: sales@poymax.co.uk, www.poymax.co.uk





## OVERVIEW

- Excellent non slip characteristics
- Excellent anti-tear properties
- Up to 1500mm wide
- Good durability & resilience
- Attractive finish and appearance
- Low maintenance



## DETAILS

Polymax Ramp Matting is made out of NR/SBR rubber moulded with a high quality fabric backing, The Fabric backing makes this matting the strongest out of our range, so strong that even with a Stanley knife it is difficult to cut.

This makes it ideal for high wear applications from Horse ramps to heavy footfall areas. Often this matting can be bolted/screwed to substrates with bolts and washers, no need for adhesive.

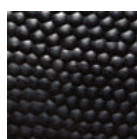
Part Number	Width (mm)	Roll Length (m)	Colour	Thickness (mm)
MM005	1200	10	Black	5.5
MM006	1500	10	Black	5.5

Material	NR/SBR
Hardness (Shore A)	70
Maximum Temperature (°C)	70
Minimum Temperature (°C)	-10
Abrasion Resistance (mm <sup>3</sup> ) (DIN53516)	200

This information is for customer guidance only. Polymax reserves the right to amend specification without prejudice.

Polymax Ltd. Building 90, SEME, Budds Lane Bordon, Hampshire, GU35 0JE, United Kingdom.  
Tel: +44 1420 474123 | Fax: +44 1420 487816 | Email: sales@poymax.co.uk, www.polymax.co.uk





## OVERVIEW

- Is made from hardwearing NR & SBR
- Very good Anti-slip & Anti Fatigue properties
- Excellent drainage and easily cleaned, perfect for temporary walk ways
- Wide rolls to cover large areas quickly
- Installation is very quick and straight forward, no adhesive required

## DETAILS

The Polymax COBBLE rubber matting is an ideal heavy duty rubber matting useful in horse box trailers, on ramps and for heavy traffic applications.

The effective cobble pattern helps provide an anti-slip top surface which has also proven useful in dampening vibration. Cobble is easy to clean and maintain with a high grip textured underside for extra hold.

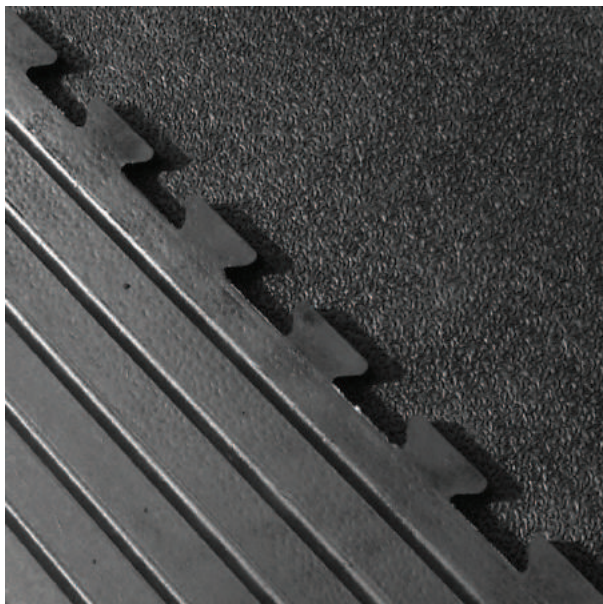
Available in 2m x 5m x 10mm it often requires no adhesive due to its weight and size.

Part Number	Width (mm)	Roll Length (m)	Colour	Thickness (mm)
1002484	1830	10	Black	10

<b>Material</b>	NR/SBR
<b>Hardness (Shore A)</b>	70
<b>Maximum Temperature (°C)</b>	70
<b>Minimum Temperature (°C)</b>	-10
<b>Density (g/m<sup>3</sup>)</b>	0.8
<b>Tensile Strength (MPa)</b>	4
<b>Elongation at break (%)</b>	250
<b>Abrasion Resistance (mm<sup>3</sup>) (DIN53516)</b>	400

This information is for customer guidance only. Polymax reserves the right to amend specification without prejudice.

**Polymax Ltd.** Building 90, SEME, Budds Lane Bordon, Hampshire, GU35 0JE, United Kingdom.  
Tel: +44 1420 474123 | Fax: +44 1420 487816 | Email: sales@poymax.co.uk, www.polymax.co.uk



## OVERVIEW

- Large mats and easy interlocking system make for a quick install (no need for adhesive)
- Bevelled edges are available to avoid any tripping hazards
- Non slip design is comfortable and safe under foot
- Hygienic, as the gym mats don't absorb any sweat or moisture
- The mat helps to absorb shock, deaden noise and protect equipment
- Maintaining the mats is effortless, they can be swept, vacuumed and mopped using Polymax Pro-long floor care kit
- These solid mats will far surpass any EVA foam mats

## DETAILS

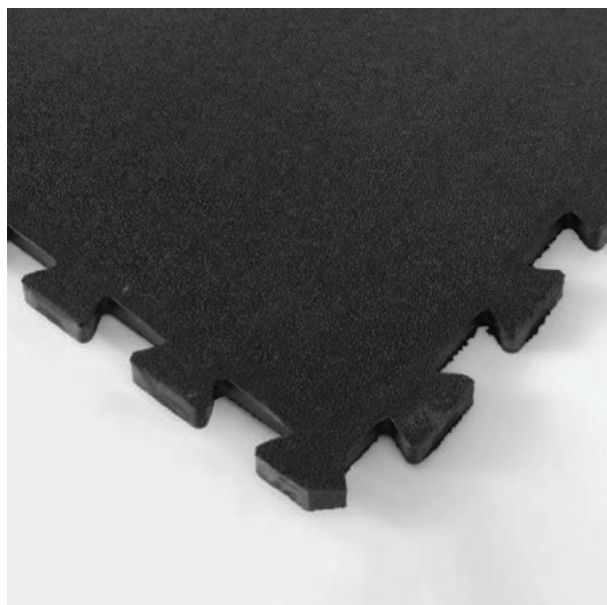
Polymax POWER Gym rubber matting is made of 100% solid shock absorbent rubber and is ideal for gymnasiums. The high density and natural rubber content make it flexible, hard wearing and tear resistant. Previous customers include many rugby club gyms, police station gyms and cross-fit gyms around the UK and Europe.

Part Number	Width (mm)	Length (mm)	Thickness (mm)	Colour	Type
1001411	1200	1800	17	Black	Tile
1001984	120	1272	17	Black	Long Side
1001985	120	666	17	Black	Short Side
1001986	120	413	17	Black	Corner
1001987	120	567	17	Black	Joint Section

<b>Material</b>	NR/SBR
<b>Hardness (Shore A)</b>	70
<b>Maximum Temperature (°C)</b>	70
<b>Minimum Temperature (°C)</b>	-10
<b>Tensile Strength (MPa)</b>	4
<b>Elongation at break (%)</b>	250
<b>Abrasion Resistance (mm<sup>3</sup>) (DIN53516)</b>	400

This information is for customer guidance only. Polymax reserves the right to amend specification without prejudice.

**Polymax Ltd.** Building 90, SEME, Budds Lane Bordon, Hampshire, GU35 0JE, United Kingdom.  
Tel: +44 1420 474123 | Fax: +44 1420 487816 | Email: sales@poymax.co.uk, www.polymax.co.uk



## OVERVIEW

- Easy to fit and replace as required
- These gym mats can come with bevelled edges to avoid tripping hazards.
- The gym Mats have a morpich pattern to provide an anti-slip surface.
- Deep grooves on the bottom of the mats help to absorb heavy impact. (This ensures that your weights and equipment will not take the brunt)

## DETAILS

Polymax Mini POWER gym rubber matting is made from 100% Solid shock absorbent rubber, ideal for Heavy impact. High density and natural rubber make it flexible, hard wearing and tear/shear resistant.

Previous customers; British Forces, British Fire Rescue Services and Cross fit clubs.

The Gym mats are easy to clean and maintain with Polymax Floor Maintenance Kit and can be mopped, swept and vacuumed. The solid rubber matting is sweat and moisture repellent, making it a hygienic solution for your gym (as opposed to using EVA foam which will tear and absorb).

This item is perfect for bespoke matting requirements and ideal in gymnasiums.

Part Number	Width (mm)	Length (mm)	Thickness (mm)	Colour	Type
1001411	500	500	16	Black	Tile
1001984	80	500	16	Black	Ramped Edge
1001985	80	580	16	Black	Edge with Corner

<b>Material</b>	NR/SBR
<b>Hardness (Shore A)</b>	70
<b>Maximum Temperature (°C)</b>	70
<b>Minimum Temperature (°C)</b>	-10
<b>Tensile Strength (MPa)</b>	4
<b>Elongation at break (%)</b>	250
<b>Abrasion Resistance (mm³) (DIN53516)</b>	400

This information is for customer guidance only. Polymax reserves the right to amend specification without prejudice.

**Polymax Ltd.** Building 90, SEME, Budds Lane Bordon, Hampshire, GU35 0JE, United Kingdom.  
Tel: +44 1420 474123 | Fax: +44 1420 487816 | Email: sales@poymax.co.uk, www.polymax.co.uk



## OVERVIEW

- Available in 1530x910 and weighing 18.5kg
- Hard wearing and long lasting
- Protection of gym equipment
- Shock absorption to protect users joints
- 20% Red-fleck design to give colour coordinated finish

## DETAILS

The new galaxy pro-tiles are Polymax's newest interlocking mats making them easy to fit and replace as required. They made from hardwearing Natural Rubber (NR) and Styrene Butadiene Rubber (SBR) making it comfortable to work on without

causing strain. It is also anti-slip ensuring safety. This item is perfect for bespoke matting requirements and is ideal for use in gymnasiums. Maintenance of the Polymax Galaxy Pro tiles is effortless, they can be swept, vacuumed and mopped using Polymax Pro-long care kit (which can also be purchased with the tiles)

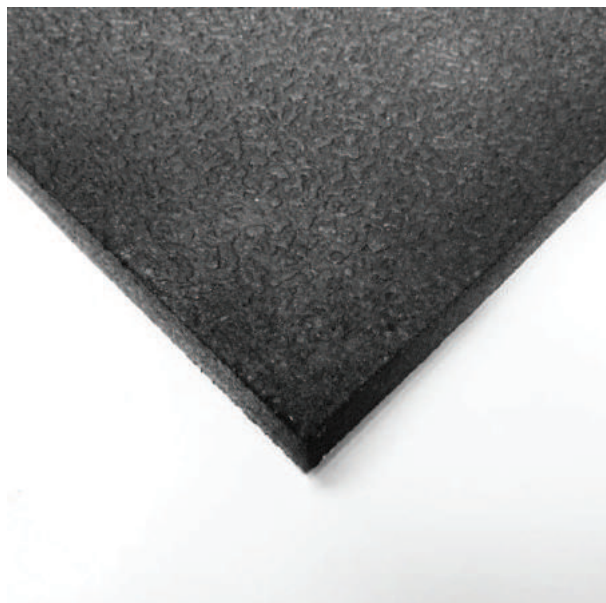
Part Number	Width (mm)	Length (mm)	Thickness (mm)	Colour
1001411	910	1530	10	Black with Red Fleck

<b>Material</b>	NR/SBR
<b>Hardness (Shore A)</b>	70
<b>Maximum Temperature (°C)</b>	70
<b>Minimum Temperature (°C)</b>	-10
<b>Tensile Strength (MPa)</b>	4
<b>Elongation at break (%)</b>	250
<b>Abrasion Resistance (mm<sup>3</sup>) (DIN53516)</b>	400

This information is for customer guidance only. Polymax reserves the right to amend specification without prejudice.

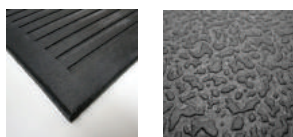
**Polymax Ltd.** Building 90, SEME, Budds Lane Bordon, Hampshire, GU35 0JE, United Kingdom.  
Tel: +44 1420 474123 | Fax: +44 1420 487816 | Email: sales@poymax.co.uk, www.polymax.co.uk





## OVERVIEW

- Available in 1.8m x 1.2m x 17mm thick weighing approx. 40KG
- Non slip design is comfortable and safe under foot
- Hygienic, as the gym mats don't absorb any sweat or moisture
- The mat helps to absorb shock, deaden noise and protect equipment
- Maintaining the mats is effortless, they can be swept, vacuumed and mopped using Polymax Pro-long floor care products
- These solid mats will far surpass and out-live any EVA foam mats



## DETAILS

Polymax FORCE Gym rubber matting is made of 100% solid shock absorbent rubber and is ideal for

gymnasiums. The high density and natural rubber content make it flexible, hard wearing and tear resistant.

For areas where free weights are being dropped it stands unrivalled. Its thickness and grooves on the under side means it is excellent in absorbing impact and protecting your floor and more importantly your weights.

Previous customers include many rugby club gyms, police station gyms and cross-fit gyms around the UK and Europe.

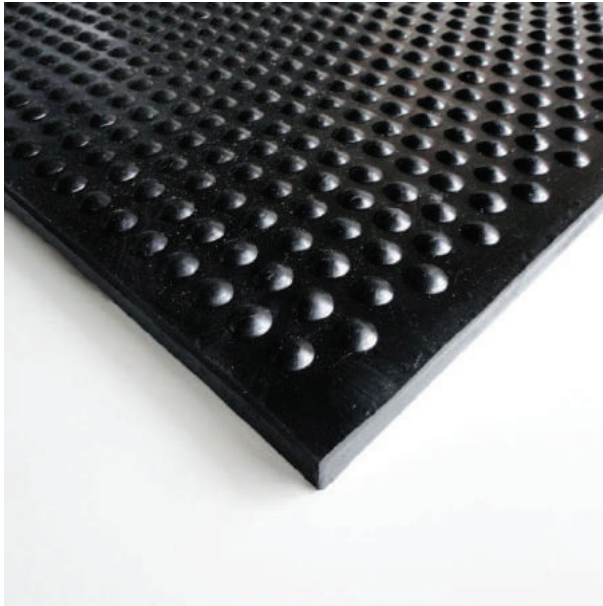
Part Number	Width (mm)	Length (mm)	Thickness (mm)	Colour
1001446	1220	1830	17	Black

<b>Material</b>	NR/SBR
<b>Hardness (Shore A)</b>	70
<b>Maximum Temperature (°C)</b>	70
<b>Minimum Temperature (°C)</b>	-10
<b>Tensile Strength (MPa)</b>	4
<b>Elongation at break (%)</b>	250
<b>Abrasion Resistance (mm³) (DIN53516)</b>	400

This information is for customer guidance only. Polymax reserves the right to amend specification without prejudice.

**Polymax Ltd.** Building 90, SEME, Budds Lane Bordon, Hampshire, GU35 0JE, United Kingdom.  
 Tel: +44 1420 474123 | Fax: +44 1420 487816 | Email: sales@poymax.co.uk, www.polymax.co.uk

# Stable Mats



## OVERVIEW

- Made from hardwearing Rubber, 6ft x 4ft x 17mm Thick
- Anti-slip
- Ideal for heavy traffic use
- Good tread and drainage
- Anti-fatigue properties
- Easy to install
- Cost effective matting

## DETAILS

The Polymax rubber stable matting is an ideal heavy duty rubber matting useful as bedding in horse stables, cattle sheds and dog kennels. The rubber acts as like an anti-bacterial barrier due to its rubber properties.

The effective top pattern helps provide an anti-slip top surface and also makes it an easier mat to clean. The wide grooves on the underside act as adequate drainage for liquids (when placed in the direction of the stable door).

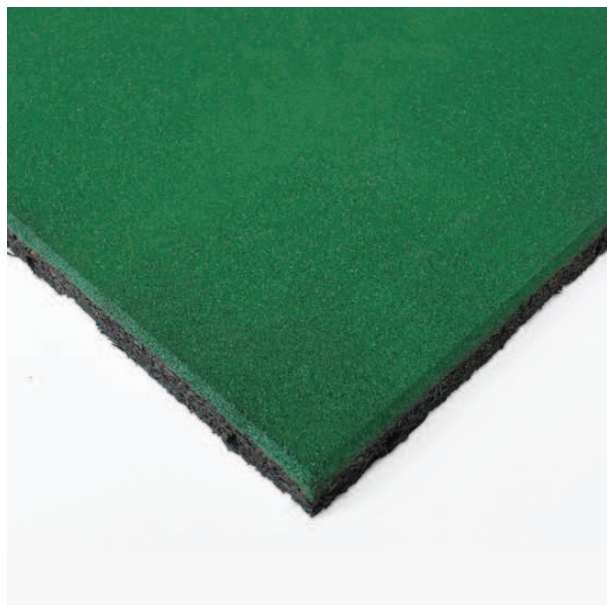
Stable mats are a beneficial, cost effective bedding product which means fewer shavings are required. Ideal for its easy cleaning and maintenance, making Polymax Stable Matting an ideal all round product.

Part Number	Width (mm)	Length (mm)	Thickness (mm)	Type
MM002	1220	1830	17	Morphic
MM014	1220	1830	17	Studded
MM015	1220	1830	17	Grid
MM020	1220	1830	17	Studded

Material	NR/SBR
Hardness (Shore A)	70
Maximum Temperature (°C)	70
Minimum Temperature (°C)	-10

This information is for customer guidance only. Polymax reserves the right to amend specification without prejudice.

Polymax Ltd. Building 90, SEME, Budds Lane Bordon, Hampshire, GU35 0JE, United Kingdom.  
Tel: +44 1420 474123 | Fax: +44 1420 487816 | Email: sales@poymax.co.uk, www.polymax.co.uk



## DETAILS

Polymax produce composite rubber safety tiles that are manufactured from environmentally friendly recycled rubber. The rubber is granulated, sieved and graded, which comprises 90% of the finished tile. The other 10% being polyurethane moisture curing prepolymer. The moulding process and stringent quality control, ensures that all safety tiles from Polymax Ltd achieve a consistent dimension, thickness, mass, and most importantly, performance.

The Tiles will require sealing and maintenance over regular intervals to ensure colour integrity as the colour will fade over time especially when used out doors due to UV and weather damage. You may wish to use Polymax Floorcare kit to protect the rubber and enhance its longevity Floor Care Kit.

This allows their use in a wide range of play area situations, and other leisure uses. Polymax safety tiles are manufactured to the highest standards,

and come in a range thickness from 30mm to 70mm and in Green or Terracotta. This ensures that the surface meets the specified critical fall height, as Certificated by RAPRA External testing body.

Part Number	Width (mm)	Length (mm)	Thickness (mm)	Colour	Details
1001320	500	500	30	Green	With Pins
1001325	1000	1000	30	Green	Premium Grade
1001379	1000	1000	30	Green	
1001319	1000	1000	45	Green	
1001322	500	500	30	Terracotta	With Pins
1002491	1000	1000	30	Terracotta	
1002490	1000	1000	45	Terracotta	

<b>Material</b>	NR/SBR
<b>Hardness (Shore A)</b>	70
<b>Maximum Temperature (°C)</b>	70
<b>Minimum Temperature (°C)</b>	-10
<b>Tensile Strength (MPa)</b>	4
<b>Elongation at break (%)</b>	250
<b>Abrasion Resistance (mm<sup>3</sup>) (DIN53516)</b>	400

This information is for customer guidance only. Polymax reserves the right to amend specification without prejudice.

**Polymax Ltd.** Building 90, SEME, Budds Lane Bordon, Hampshire, GU35 0JE, United Kingdom.  
Tel: +44 1420 474123 | Fax: +44 1420 487816 | Email: sales@poymax.co.uk, www.polymax.co.uk



## OVERVIEW

- Made from hardwearing Natural Rubber (NR/SBR)
- Anti-slip & Anti Fatigue
- Hardwearing
- EASI matting is also available in Fire Retardent mats version tested as per BS 5173

## DETAILS

The Polymax EASI rubber matting (also known as Grass Mats or Ring Mats) has raised knobs on the underside; ensuring good drainage. These knobs also compress under pressure which makes them ideal for safety matting in children playgrounds as tested by RAPRA to critical fall heights upto 3.4m.

Polymax EASI's are available in different thickness depending on the application. The EASI mats are similar to the COMBI mats in that they have round holes, whereas the ORBIK mats have hexagonal holes. All are useful for grass areas, adventure playground safety matting and walkway matting.

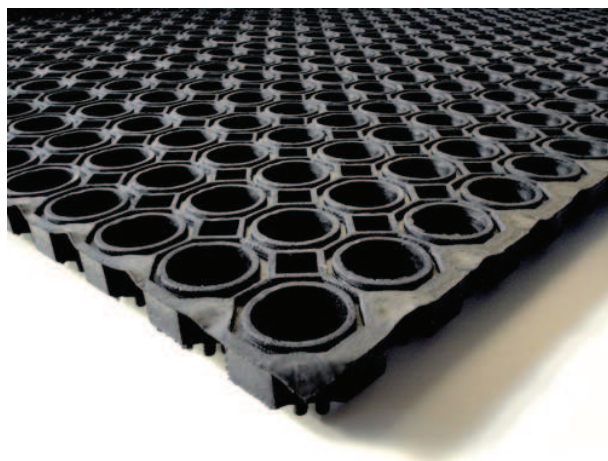
Rubber connectors and cable ties can be used to link EASI mats; thus it is possible to cover large or small areas easily.

Part Number	Width (mm)	Length (mm)	Thickness (mm)	Colour - Details
1001300	300	1000	23	Black
1001360	400	600	23	Black
1001361	800	1200	16	Black
1001362	1000	1500	23	Black
1001716	1000	1500	22	Black - Fire Retardent
1002482	1000	1500	23	Yellow
1002485	1000	1500	23	Green
1002486	1000	1500	23	Terracotta

<b>Material</b>	NR/SBR
<b>Hardness (Shore A)</b>	70
<b>Maximum Temperature (°C)</b>	70
<b>Minimum Temperature (°C)</b>	-10
<b>Tensile Strength (MPa)</b>	4
<b>Elongation at break (%)</b>	250
<b>Abrasion Resistance (mm<sup>3</sup>) (DIN53516)</b>	400

This information is for customer guidance only. Polymax reserves the right to amend specification without prejudice.





## OVERVIEW

- Made from hardwearing Natural Rubber (NR/SBR)
- Anti-slip & Anti Fatigue
- Hardwearing
- Can be used in production plants, swimming pool areas, entrance matting for offices and home, ski slopes, golf tee off areas, to cover open grass areas and for playground safety matting

## DETAILS

Polymax ORBIK- has anti-fatigue and anti-slip features. Holes in the design of the mat to ensure easy cleaning and good drainage. Hosing down or Jet washing are the recommended ways to keep these mats clean.

As featured in BBC program "Garden Invaders" Polymax ORBIK matting has been successfully used in grassed areas. Once grass has grown through the holes in the matting; the mats virtually disappear from view leaving a safe and comfortable grass area.

Orbik mats have been tested by RAPRA and is suitable for children's playground surfaces and is also strong enough for permanent overflow car parks.

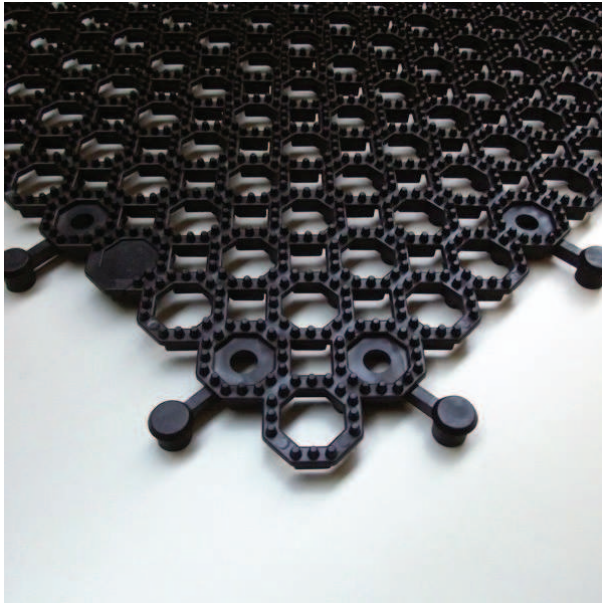
Molded rubber connecting hinges or cable ties can be used to join ORBIK mats, creating a solid rubber mat area. Pegs can be used to fix them into position so they do not shift over time.

Part Number	Width (mm)	Length (mm)	Thickness (mm)	Colour
1001308	1000	1500	22	Black

<b>Material</b>	NR/SBR
<b>Hardness (Shore A)</b>	70
<b>Maximum Temperature (°C)</b>	70
<b>Minimum Temperature (°C)</b>	-10
<b>Tensile Strength (MPa)</b>	4
<b>Elongation at break (%)</b>	250
<b>Abrasion Resistance (mm<sup>3</sup>) (DIN53516)</b>	400

This information is for customer guidance only. Polymax reserves the right to amend specification without prejudice.

**Polymax Ltd.** Building 90, SEME, Budds Lane Bordon, Hampshire, GU35 0JE, United Kingdom.  
Tel: +44 1420 474123 | Fax: +44 1420 487816 | Email: sales@poymax.co.uk, www.polymax.co.uk



## OVERVIEW

- Open grid Interlocking tiles
- Made from 100% REACH compliant recycled PVC
- Slip resistant, hard wearing on pimpled surface
- Chemical, oil and acid resistant

## DETAILS

Polymax Easi Lok is a hard wearing open grid tiling system made from 100% REACH compliant recycled PVC, delivering long life and value for money. It can be used as a temporary or permanent flooring solution for areas where heavy spillage is likely, laboratories, machine shops, fishing boats, or assembly areas.

The pimples offer an amazing grip when used indoors or out doors and assembly is made easy with the interlocking sides. These tiles are also available with a high-viz yellow edge to avoid any tripping hazard on this 16mm height product.

Part Number	Width (mm)	Length (mm)	Thickness (mm)	Colour	Type
1022127	500	500	16	Black	Tile
1022128	60	500	16	Black	Female Edging
1022129	60	500	16	Yellow	Female Edging
1022130	60	500	16	Black	Male Edging
1022131	60	500	16	Yellow	Male Edging
1022132	60	60	16	Black	Corner
1022133	60	60	16	Yellow	Corner

<b>Material</b>	PVC
<b>Hardness (Shore A)</b>	70
<b>Maximum Temperature (°C)</b>	60
<b>Minimum Temperature (°C)</b>	-10
<b>Tensile Strength (MPa)</b>	4
<b>Elongation at break (%)</b>	250

This information is for customer guidance only. Polymax reserves the right to amend specification without prejudice.

**Polymax Ltd.** Building 90, SEME, Budds Lane Bordon, Hampshire, GU35 0JE, United Kingdom.  
 Tel: +44 1420 474123 | Fax: +44 1420 487816 | Email: sales@poymax.co.uk, www.polymax.co.uk



## OVERVIEW

- Anti-fatigue properties
- Modular system withstands wet, greasy environments
- Nib backing for better drainage and aeration
- Ramps available
- Easy to install, no adhesive required

## DETAILS

Polymax COMBI does not need additional accessories to connect the matting together compared to the Polymax ORBIK and EASI rubber matting. The Polymax COMBI rubber matting is ideal for light to medium use. Heavy duty usage would suit Polymax ORBIK or EASI matting.

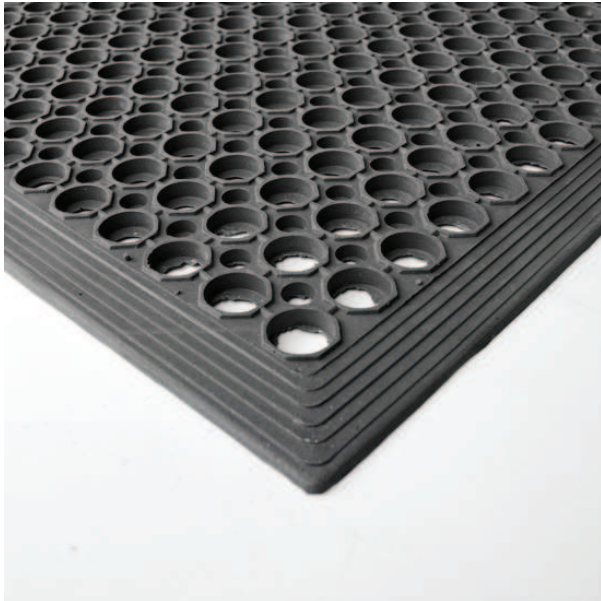
The COMBI rubber matting has raised knobs on the bottom surface which aids water run off. This product is a good choice for factory shop floors, production plants, swimming pools and outdoor grass areas to just to name a few.

Part Number	Width (mm)	Length (mm)	Thickness (mm)	Colour
1001363	914	914	15	Black

Material	NR/SBR
Hardness (Shore A)	70
Maximum Temperature (°C)	70
Minimum Temperature (°C)	-10
Tensile Strength (MPa)	4
Elongation at break (%)	250
Abrasion Resistance (mm <sup>3</sup> ) (DIN53516)	400

This information is for customer guidance only. Polymax reserves the right to amend specification without prejudice.

Polymax Ltd. Building 90, SEME, Budds Lane Bordon, Hampshire, GU35 0JE, United Kingdom.  
Tel: +44 1420 474123 | Fax: +44 1420 487816 | Email: sales@poymax.co.uk, www.polymax.co.uk



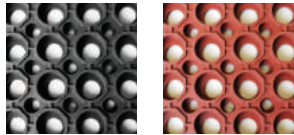
## OVERVIEW

- Bevelled edged mat ideal for areas where fatigue is common
- Anti Slip and Anti Fatigue Rubber matting
- Good drainage and easy to jet wash clean
- Terracotta version is oil resistant
- Ideal for Entrances, walk ways or wash down areas

## DETAILS

FIRMA Rubber mats are suited for applications in which the operator is required to be "on the feet" for long hours.

As compared to the Polymax ORBIK, FIRMA rubber matting has Molded bevelled edges which reduces trip hazards in the work place. Holes in the



mat provide good drainage for liquid spillages and FIRMA rubber matting can be easily cleaned, generally best done by jet washing.

Red coloured FIRMA rubber matting is made from oil resistant rubber and is ideal for restaurants and kitchens

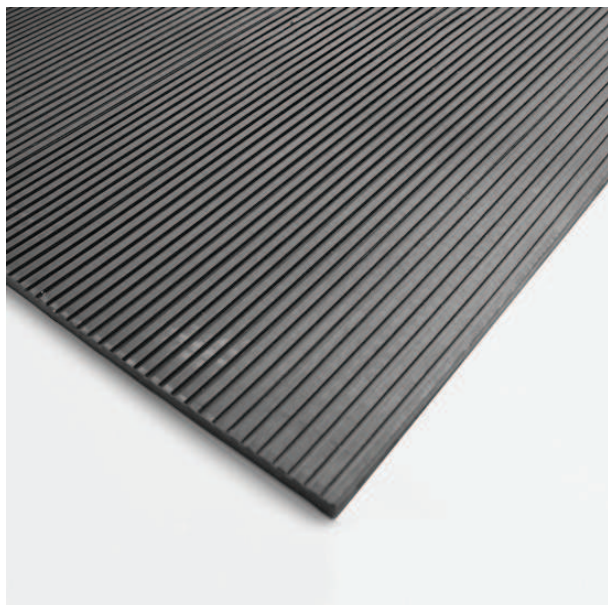
Part Number	Width (mm)	Length (mm)	Thickness (mm)	Colour
1001366	915	1500	15	Black
1001440	915	1500	15	Red

<b>Material</b>	NR/SBR
<b>Hardness (Shore A)</b>	70
<b>Maximum Temperature (°C)</b>	70
<b>Minimum Temperature (°C)</b>	-10
<b>Tensile Strength (MPa)</b>	4
<b>Elongation at break (%)</b>	250
<b>Abrasion Resistance (mm<sup>3</sup>) (DIN53516)</b>	400

This information is for customer guidance only. Polymax reserves the right to amend specification without prejudice.

**Polymax Ltd.** Building 90, SEME, Budds Lane Bordon, Hampshire, GU35 0JE, United Kingdom.  
Tel: +44 1420 474123 | Fax: +44 1420 487816 | Email: sales@poymax.co.uk, www.poymax.co.uk





## OVERVIEW

- Engine test beds
- Washing machines (domestic or industrial)
- Heavy static generators
- Compressors
- Hydraulic presses

## DETAILS

The Anchor Mat is a specially compounded pad designed to isolate vibration. It has 5mm wide ribs that run at an angle of 90° to each other on either side to ensure good grip and anti-vibration properties. Max Load: 5kg/cm<sup>2</sup> per mat

Load capacity may be increased by using multiple layers. For optimum isolation, use a metal plate to separate the layers and distribute the weight of the machinery.

Part Number	Width (mm)	Length (mm)	Thickness (mm)	Material
1001301	590	590	10	NR
1001304	250	250	8	NR
1001305	250	250	10	NBR
1001306	500	500	10	NBR
1001307	590	590	10	NBR
1001376	250	250	10	NR
1001377	500	500	10	NR
1001412	500	500	8	NBR
1001413	500	500	8	NR
1001414	250	250	8	NBR

Hardness (Shore A)	50
Maximum Temperature (°C)	70
Minimum Temperature (°C)	-10
Tensile Strength (MPa)	3.4
Elongation at break (%)	270
Density (g/m <sup>3</sup> )	1.08

This information is for customer guidance only. Polymax reserves the right to amend specification without prejudice.

Polymax Ltd. Building 90, SEME, Budds Lane Bordon, Hampshire, GU35 0JE, United Kingdom.  
Tel: +44 1420 474123 | Fax: +44 1420 487816 | Email: sales@poymax.co.uk, www.poymax.co.uk

# Carpet Door Mat

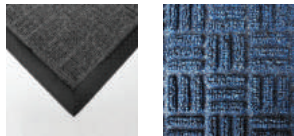


## OVERVIEW

- Made from hardwearing Polypropylene carpet and rubber
- Effectively scrapes dirt and traps moisture
- 300 gsm carpet with 3mm pile height
- Anti-trip bevelled edges
- Hardwearing

## DETAILS

The Polymax entrance matting is an ideal rubber carpet for that professional look. The matting is made from a non-fading, 300 gsm thick pile carpet in steel grey or blue, backed with an anti-slip studded bottom surface. The standard studded bottom surface prevents the mats from moving on carpeted areas or smooth flooring tiles.



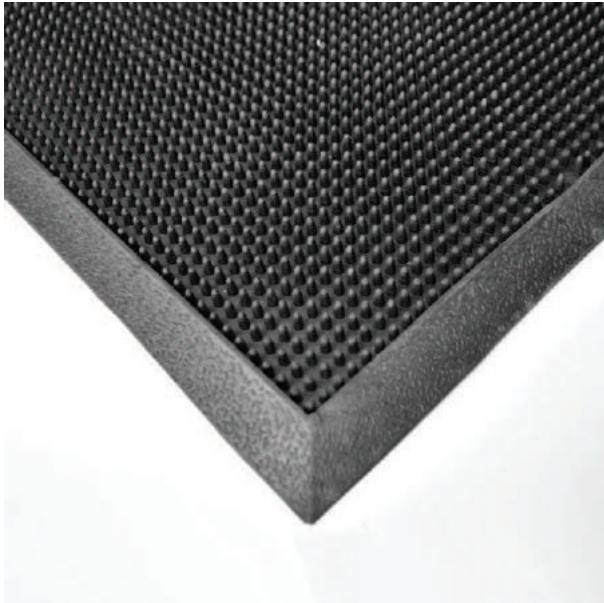
The innovative raised twist carpet pile effectively traps moisture and dirt. Together with its anti-trip bevelled edges, great appearance and tough carpet surface, the Polymax entrance mats are ideal for office and home use.

Part Number	Width (mm)	Length (mm)	Thickness (mm)	Colour
1002033	400	600	13	Blue
1001483	600	900	13	Blue
1001484	900	1500	14	Blue
1001406	400	600	13	Grey
1001408	600	900	13	Grey
1001409	900	1500	14	Grey

<b>Material</b>	Polypropylene/NR
<b>Maximum Temperature (°C)</b>	70
<b>Minimum Temperature (°C)</b>	-10

This information is for customer guidance only. Polymax reserves the right to amend specification without prejudice.

**Polymax Ltd.** Building 90, SEME, Budds Lane Bordon, Hampshire, GU35 0JE, United Kingdom.  
Tel: +44 1420 474123 | Fax: +44 1420 487816 | Email: sales@poymax.co.uk, www.polymax.co.uk



**OVERVIEW**

- Made from long lasting Natural Rubber (NR) & hardwearing Styrene Butadiene (SBR)
- Very good slip resistant entrance mat with a Anti-trip bevelled edge
- Ideal for heavy traffic use
- Effective cleaning surface, easy to clean using jet wash or hose and brush
- Good grip on the underside

**DETAILS**

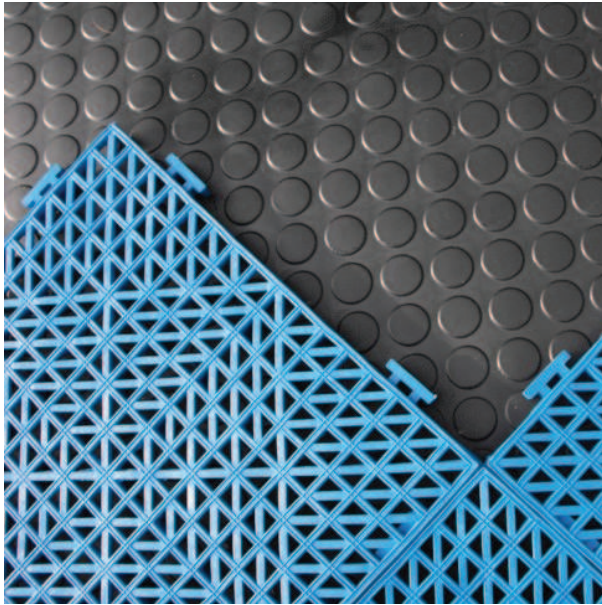
The Polymax CONA rubber door mat is a heavy duty product useful as entrance floor matting because it has anti-slip (pin finger design) and an anti-trip bevelled edge for safety. The multiple surface rubber pins on the top surface provide a more effective cleaning surface, while the ridges on the underside ensure good grip on the surface it is laid upon.

Part Number	Width (mm)	Length (mm)	Thickness (mm)	Colour
1001369	600	1000	13	Black
1001370	900	1500	13	Black
1001371	900	1800	10	Black

<b>Hardness (Shore A)</b>	70
<b>Maximum Temperature (°C)</b>	70
<b>Minimum Temperature (°C)</b>	-10
<b>Tensile Strength (MPa)</b>	4
<b>Elongation at break (%)</b>	250
<b>Abrasion Resistance (mm³) (DIN53516)</b>	400

This information is for customer guidance only. Polymax reserves the right to amend specification without prejudice.

**Polymax Ltd.** Building 90, SEME, Budds Lane Bordon, Hampshire, GU35 0JE, United Kingdom.  
 Tel: +44 1420 474123 | Fax: +44 1420 487816 | Email: sales@poymax.co.uk, www.polymax.co.uk



## OVERVIEW

- Swimming Pool Surrounds, Chlorine resistant
- Changing Areas
- Shower Rooms
- Out Door Walkways
- Door Entrances and as a temporary non slip surface
- They are also very hardwearing and oil resistant

## DETAILS

The Polymax DECK-PRO , is a non-slip pvc flooring. Ideal for applications where grip is paramount. Oil, Grease and Chlorine Resistant. Available in easy to lay interlockable tiles with a hardwearing high quality surface finish.

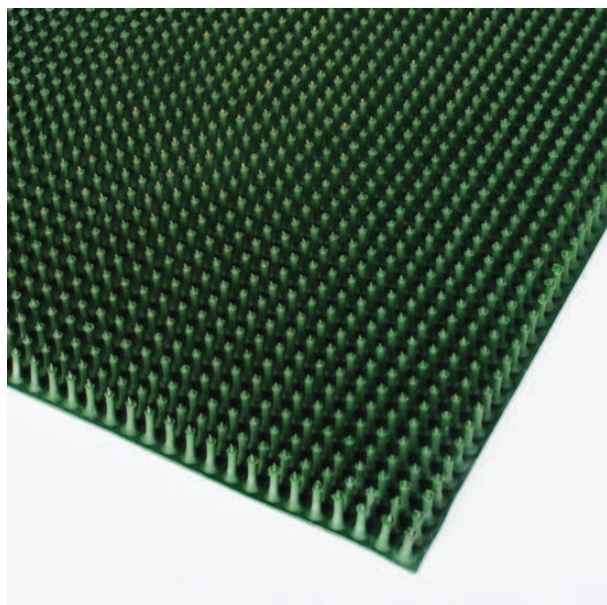
Part Number	Width (mm)	Length (mm)	Thickness (mm)	Colour
1002483	300	300	17	Blue

Material	PVC
Hardness (Shore A)	75
Maximum Temperature (°C)	100
Minimum Temperature (°C)	-20
Tensile Strength (MPa)	8
Elongation at break (%)	200
Abrasion Resistance (mm <sup>3</sup> ) (DIN53516)	150
Density (g/m <sup>3</sup> )	1.08

This information is for customer guidance only. Polymax reserves the right to amend specification without prejudice.

Polymax Ltd. Building 90, SEME, Budds Lane Bordon, Hampshire, GU35 0JE, United Kingdom.  
Tel: +44 1420 474123 | Fax: +44 1420 487816 | Email: sales@poymax.co.uk, www.polymax.co.uk





## OVERVIEW

- Made from tear resistant Natural Rubber (NR)
- Anti-slip
- Environmentally friendly
- UV and ozone friendly
- Available in 450mm x 372.5mm x 20mm
- Available in green only
- Multiple usage

## DETAILS

The Polymax Pin rubber matting is renowned for its 'Pin' shaped, elongated rubber stems giving this mat its descriptive name. It has been developed with the environment in mind and so has been coloured green as it has been made without the use of harmful petrol derivatives.

The Pin mat contains anti-oxidants which make it Ozone stabilised and UV resistant and is made from natural rubber which has a high polymer strength giving this product greater mechanical strength and tear resistance than others like it.

The mats are 450mm x 372.5mm x 20mm with a cloth impression on back so it has good anti-slip properties.

Part Number	Width (mm)	Length (mm)	Thickness (mm)	Colour
1001369	372.5	450	20	Black

<b>Material</b>	NR
<b>Hardness (Shore A)</b>	60
<b>Maximum Temperature (°C)</b>	70
<b>Minimum Temperature (°C)</b>	-10
<b>Tensile Strength (MPa)</b>	14.7
<b>Elongation at break (%)</b>	600
<b>Density (g/m<sup>3</sup>)</b>	1.08

This information is for customer guidance only. Polymax reserves the right to amend specification without prejudice.

**Polymax Ltd.** Building 90, SEME, Budds Lane Bordon, Hampshire, GU35 0JE, United Kingdom.  
Tel: +44 1420 474123 | Fax: +44 1420 487816 | Email: sales@poymax.co.uk, www.poymax.co.uk

# Premium Circa Tiles



## DETAILS

Polymax CIRCA rubber is ideal for large floor areas such as, kitchens, hallways and offices. It is equally as good for walkways, footbridges, vans and lorries.

The distinguishing circular anti-slip, studded surface gives an aesthetically pleasing finish to any industrial, commercial or domestic setting.

Part Number	Width (mm)	Length (mm)	Thickness (mm)	Colour
1003423	500	500	2.7	Coal
1003401	500	500	2.7	Slate Grey
1003403	500	500	2.7	Urban Grey
1003404	500	500	2.7	Aluminium
1003407	500	500	2.7	Teal Blue
1003409	500	500	2.7	Milk Chocolate
1003410	500	500	2.7	Forest Green
1003411	500	500	2.7	Cinnamon
1003412	500	500	2.7	Sage Green
1003413	500	500	2.7	Venetian Red
1003414	500	500	2.7	Halcyon Yellow
1003415	500	500	2.7	Burnt Orange
1003416	500	500	2.7	Butter Scotch
1003417	500	500	2.7	Cobalt Blue
1003421	500	500	2.7	Pacific Blue

<b>Material</b>	NR/SBR
<b>Hardness (Shore A)</b>	85
<b>Maximum Temperature (°C)</b>	70
<b>Minimum Temperature (°C)</b>	-10
<b>Abrasion Resistance (mm<sup>3</sup>) (DIN53516)</b>	150

This information is for customer guidance only. Polymax reserves the right to amend specification without prejudice.



Polymax Ltd. Building 90, SEME, Budds Lane Bordon, Hampshire, GU35 0JE, United Kingdom.  
Tel: +44 1420 474123 | Fax: +44 1420 487816 | Email: sales@poymax.co.uk, www.poymax.co.uk

# Premium Slate Effect Tiles



## OVERVIEW

- Authentic and stylish slate effect rubber floor tiles.
- A practical and cost-effective alternative to genuine slate and stone floors.
- Manufactured from resilient rubber for durability.
- Easy to clean and maintain that 'as new' appearance.
- Manufactured from a combination of natural/ synthetic rubber.
- A popular choice for both commercial and domestic interiors.
- Applied by adhesion to the floor.

Part Number	Width (mm)	Length (mm)	Thickness (mm)	Colour
1003100	500	500	3.5	Slate Grey 
1003101	500	500	3.5	Black 

Material	NR/SBR
Hardness (Shore A)	65
Maximum Temperature (°C)	70
Minimum Temperature (°C)	-10
Tensile Strength (MPa)	35
Elongation at break (%)	250

This information is for customer guidance only. Polymax reserves the right to amend specification without prejudice.

**Polymax Ltd.** Building 90, SEME, Budds Lane Bordon, Hampshire, GU35 0JE, United Kingdom.  
Tel: +44 1420 474123 | Fax: +44 1420 487816 | Email: sales@poymax.co.uk, www.polymax.co.uk

# MAPEI G19/G20 Two Part Adhesive



## OVERVIEW

ADESILEX G20/G19 is used for bonding:

- Thin rubber flooring.
- Semiflexible homogeneous or composition PVC flooring.
- Exterior textile and needlepunch flooring.

## WHERE TO USE

- Interior and exterior bonding of flooring in rubber, PVC, textiles, needlepunch, linoleum, polystyrene and polyurethane panels, fibrous cement, wood, sheet metal, plastic laminates.

## DETAILS

ADESILEX G20/G19 is a low viscosity two component adhesive consisting of a polyurethane polymer, part A, and a special hardener, part B. By accurately mixing the two components together a uniformly coloured paste is obtained, that can easily be applied with a trowel, roller or spreader. ADESILEX G20/G19 can only be applied on horizontal surfaces.

Part Number	Product Name	Max Coverage (m <sup>2</sup> )	Weight (Kg)
3005005	MAPEI G19 Two part PU Adhesive 2kgs	4	2
3005003	MAPEI G20 Two part PU Adhesive 5kgs	15	5
3005004	MAPEI G20 Two part PU Adhesive 10 kgs	30	10

Colour	Beige
Density (g/m <sup>3</sup> )	1.45
Dry Solids Content (%)	97
Maximum Temperature (°C)	100
Minimum Temperature (°C)	-40

This information is for customer guidance only. Polymax reserves the right to amend specification without prejudice.

Polymax Ltd. Building 90, SEME, Budds Lane Bordon, Hampshire, GU35 0JE, United Kingdom.  
Tel: +44 1420 474123 | Fax: +44 1420 487816 | Email: sales@poymax.co.uk, www.polymax.co.uk



# MAPEI VS90 Acrylic Adhesive



## OVERVIEW

UltraBond Eco VS90 is often used for Interior installation of:

- Vinyl sheet and tiles
- Semi-flexible vinyl and PVC tiles
- Polyurethane and PVC backed carpets
- Secondary backed and needlepunch carpets
- Rubber tile and sheet

On all normal absorbent and moisture stable substrates used in construction.

## DETAILS

UltraBond Eco VS90 is a universal high temperature solvent free non-staining acrylic adhesive in water dispersion, formulated in an easily trowellable paste, with very low emission of volatile organic compounds

It is no-flammable and contains no toxic substances; it can therefore be stored without special precautions and presents no health hazard during use.

Part Number	Product Name	Max Coverage (m <sup>2</sup> )	Weight (Kg)
3005023	MAPEI VS90 Acrylic Adhesive 5kgs	18	5
3005025	MAPEI VS90 Acrylic Adhesive 15kgs	55	15

Material	Cream
Density (g/m <sup>3</sup> )	1.3
Dry Solids Content (%)	73
Application Temperature Range:	from +10°C to +35°C
Waiting time (Mins):	10 - 20
Elongation at break (%)	250

This information is for customer guidance only. Polymax reserves the right to amend specification without prejudice.

Polymax Ltd. Building 90, SEME, Budds Lane Bordon, Hampshire, GU35 0JE, United Kingdom.  
Tel: +44 1420 474123 | Fax: +44 1420 487816 | Email: sales@poymax.co.uk, www.polymax.co.uk